

C-COM to Exhibit at MWC Barcelona 2026



Will be exhibiting its
8-Channel Ka-band Analog
Beamformer Integrated Circuit (BFIC)



BARCELONA
2 – 5 MARCH 2026

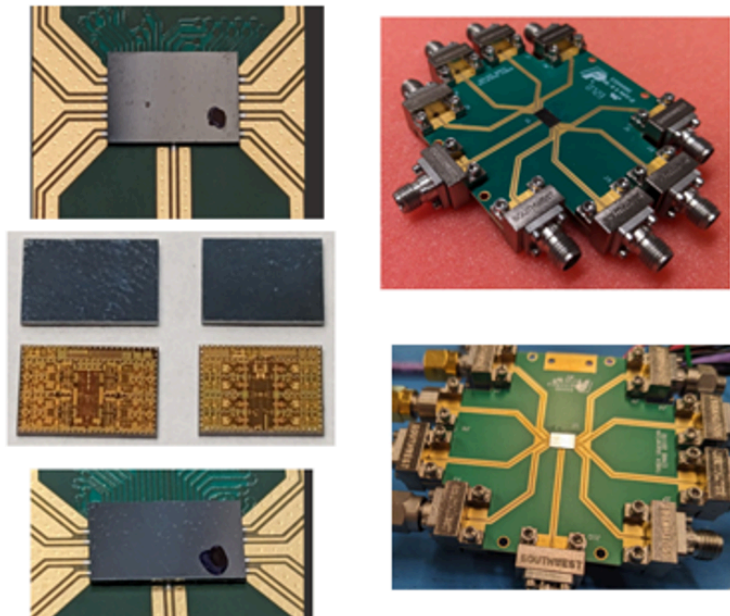
Join us at our stand **#7H45, kiosk #8**

C-COM Satellite Systems Inc. will be attending the Mobile World Congress (MWC) 2026, in Barcelona, Spain, March 2-5. and will be exhibiting its **8-Channel Ka-band Analog Beamformer Integrated Circuit (BFIC)**.

Situated in the Ontario/Canada Pavilion **#7H45, kiosk #8**, we look forward to seeing you there.

C-COM's Chief Technology Officer, **Bilal Awada**, will be in attendance and will be pleased to meet you and discuss with you the features and capabilities of this newly designed Integrated Circuit.

For more information or to schedule an appointment with **Bilal**, please contact: bawada@c-comsat.com



**High Efficiency 8-Channel Ka-band Beamformer IC
for SatCom**

About C-COM Satellite Systems Inc.

C-COM Satellite Systems Inc. is a pioneer and a leading global designer, developer, and manufacturer of transportable and mobile satellite-based antenna systems. The Company has developed proprietary, auto-acquisition controller technology for rapid antenna pointing to a satellite with just the press of a button, enabling Broadband Internet via Satellite across a wide range of

market applications worldwide, including regions unserved or underserved by terrestrial access technologies.

C-COM has sold more than 11,000 antenna systems, in over 100 countries, through a dedicated dealer network that provides service to a wide range of vertical markets such as Oil and Gas Exploration, Military Communications, Disaster Management, SNG, Emergency Communications, Cellular Backhaul, Telemedicine, Mobile Education, Government Services, Mobile Banking, and others. The Company's iNetVu® brand is synonymous with high quality, reliability, and cost-effectiveness.

C-COM is in the final stages of satellite testing and manufacturing of a potentially revolutionary Ka-band, Multi-orbit, electronically steerable, modular, conformal, **flat panel Phased Array Antenna**. C-COM has developed this unique multi-orbit antenna with the intent of providing low-cost, high-throughput mobility applications over satellite for land, airborne and maritime verticals over LEO, MEO and GEO satellite constellations.

Another significant project underway at C-COM is the development of an **8-Channel Ka-band Analog Beamforming Integrated Circuit (BFIC)**, which is progressing well and is now in a testing phase. These BFICs will be used in the manufacturing of all our ESA antennas with the intent to significantly reduce their cost and improve their performance and will also be made available for sale.

For additional information please visit www.c-comsat.com

iNetVu® is a registered trademark of C-COM Satellite Systems Inc.

The Company is publicly traded on the Canadian Venture Exchange (**TSXV: CMI**) and on the US OTC Exchange (**OTCQB: CYSNF**).

www.c-comsat.com



C-COM Satellite Systems Inc. | 2574 Sheffield Road | Ottawa, ON K1B 3V7 CA

[Unsubscribe](#) | [Constant Contact Data Notice](#)