



www.c-comsat.com

2574 Sheffield Road | Ottawa, Canada | K1B 3V7  
Tel: 613-745-4110 | Fax: 613-745-7144

## Discover C-COM's Most Innovative Satcom Solutions



C-COM Satellite Systems is redefining mobile satellite connectivity with our latest range of innovative **auto-deploy and transportable antenna solutions**.

Our next-generation antenna systems are **lighter, more compact, and faster to deploy** — delivering reliable broadband connectivity anywhere in the world. **Designed for mobility and performance**, they're ideal for government, enterprise, and emergency response applications."

### **MP-101-MOT - Manpack**

The iNetVu® MP-101-MOT is a fully motorized, auto-acquire, 100cm carbon fiber Manpack antenna. This robust and lightweight (~20kg) system will point to any programmed satellite with just the push of a button on the NEW iNetVu® 8050 Controller. C-COM's highly portable, multi-segment Manpack can be hand-carried by one person and assembled in less than 10 minutes with no tools required.



### **Additional Information**

## MP-130-MOT - Manpack

The iNetVu® MP-130-MOT is a fully motorized, auto-acquire, 130 cm carbon fiber Manpack antenna. This robust and lightweight system will point to any programmed satellite with just the push of a button on the NEW iNetVu® 8050 Controller. The 8050 Controller supports DVB-S2X and is fully compatible with a list of open AMIP supported modems. C-COM's highly portable, multi-segment Manpack can be hand-carried and assembled in less than 10 minutes with no tools required.



### Additional Information



## FLY-1202 – Flyaway

The iNetVu® 1.2m Flyaway Antenna System is a highly portable, self-pointing, auto-acquire unit that is configurable with the iNetVu® 7715 Controller and can be assembled in less than 15 minutes by one person. The antenna features a 2-piece segmented glass Carbon reflector with compact pedestal and is designed to be cost-effective while providing exceptional performance in a light weight package. Field Upgradable to Ka.

### Additional Information

## FLY-74G – Flyaway

The iNetVu® FLY-74G Flyaway Antenna is a 74 cm highly portable Ka-band, self-pointing, auto-acquire system that is configurable with the iNetVu® 7715 Controller, providing fast satellite acquisition within minutes, anytime anywhere. The antenna works seamlessly with the world's emerging commercial satellites. It can be assembled in 10 minutes by one person.

### Additional Information



### **Ka-74G – Driveaway**

The iNetVu® Ka-74G Drive-Away Antenna is a 74 cm auto-acquire satellite antenna system. It can be mounted on the roof of a vehicle for Broadband Internet Access over any configured satellite. The system works seamlessly with the iNetVu® 7715 Controller providing fast satellite acquisition within minutes, anytime anywhere. Ka-74G supports Global Invacom & Gilat Ka-band Transceivers.

#### **Additional Information**

### **7715 Controller**

The iNetVu® 7715 VSAT Antenna Controller is a simple stand-alone one touch operation to find satellite & stow antenna. Ideal for applications that require a quick, simple setup and reliable connection. Only works with iNetVu® mobile antenna platforms which are equipped with 7720/7725 on-board module.

#### **Additional Information**



### **1200+ – Driveaway**

The iNetVu® 1200+ Drive-Away antenna system is a sleek, simple to operate auto-deploy VSAT terminal which can be mounted on the roof of a vehicle. All three motorized axes have very low backlash and work together seamlessly with sophisticated integral sensors and the iNetVu® 7715 Controller to ensure excellent pointing accuracy.

#### **Additional Information**





### **iNetVu® OneWeb Transportable Pop-Up Case - HL1100 ESA Terminal**

The iNetVu® OneWeb Transportable Pop-Up Case is designed to accommodate the single-panel HL1100 ESA. It allows the user to fully operate the HL1100 ESA antenna directly from its transportable case. The HL1100 ESA panel tilt angle is adjustable, and the case design provides space for a modem, power supply, cables, and an additional storage area for any extra peripherals.

**Additional Information**

***Coming Soon...***

### **Ka-band Phased Array Antennas**

C-COM is in the final stages of manufacturing a multi-orbit **Ka-band**, electronically steered (**ESA**), modular, conformal, flat panel phased array antenna, which is designed to operate on LEO, MEO and GEO satellites.



### **iNetVu® OneWeb Transportable Pop-Up Case - HL1120 ESA Terminal**

The iNetVu® OneWeb Transportable Pop-Up Case is designed to accommodate the dual-panel HL1120 ESA. It allows the user to fully operate the HL1120 ESA antenna directly from its transportable case. The HL1120 ESA panel tilt angle is adjustable, and the case design provides space for a modem, power supply, cables, and an additional storage area for any extra peripherals.

**Additional Information**

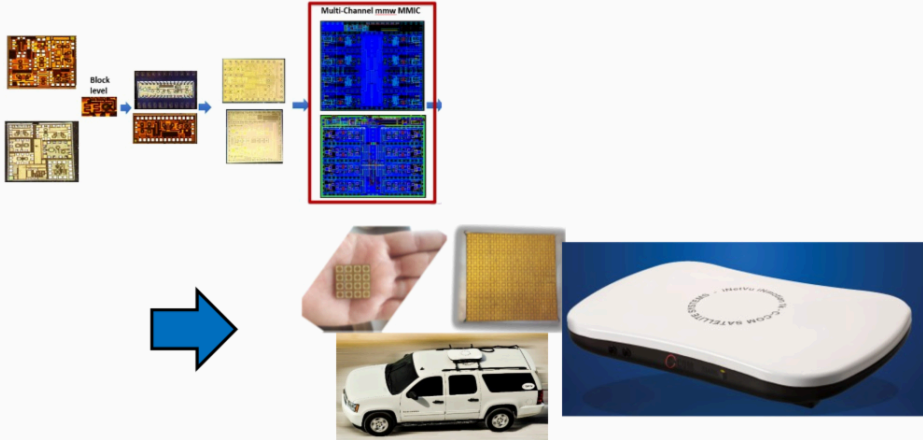


### **iNetVu® iNmotion 1K/2K/4K Data sheet**

## **8 Channel Analogue Ka-band Beamforming Integrated Circuit**

C-COM is also developing a **Ka-band Beamforming Integrated Circuit (BFIC)**, which is the basic building block of any Electronically Steered Phased array antenna. Using these novel and proprietary Beamformers will enable C-COM to manufacture a more cost effective ESA antenna, which also will consume less power and deliver better performance than presently available BFIC's.

# Highly Efficient Cost-Effective BFICs for SatCom Antenna Market



**Download our complete list of products**

Whether you're a long-time reseller or new to our product family, C-COM offers **cutting-edge technology, superior reliability coupled with unmatched technical support and backed by 28 years of proven expertise.**

**Connect. Communicate. Anywhere.**  
**C-COM Satellite Systems Inc.**

[sales@c-comsat.com](mailto:sales@c-comsat.com)

[www.c-comsat.com](http://www.c-comsat.com)



C-COM Satellite Systems Inc. | 2574 Sheffield Road | Ottawa, ON K1B 3V7 CA

[Unsubscribe](#) | [Constant Contact Data Notice](#)