

iNetVu® OneWeb Mobility Mount- HL1100 ESA Terminal



TECHNICAL SPECIFICATIONS

The iNetVu® HL1100 OneWeb Mobility Mount is designed to support the installation of the Hughes HNS HL1100 ESA Terminal onto the roof of a vehicle, or any other structure or platform. The OneWeb Mobility Mount makes it possible to deliver mobile communications using the Eutelsat OneWeb LEO Constellation.

Designed with and Certified by Hughes

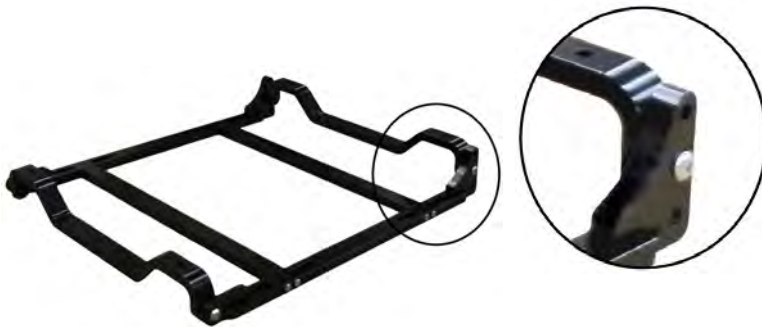
Feature

- Rigid Aluminum construction lightweight & robust
- Assembly within few minutes - all fasteners included
- Allows HL1100 Single Panel Antenna to be quickly mounted on roof racks
- One person installation
- Optimized for Thule, Yakima, and other industry standard roof racks
- Both products accommodate the Hughes HL1100 ODU (ESA), IDU, and PSU, with no modifications required
- Optional adjustable tilt adapter kit offers 3 tilt settings (0, 3, or 6 deg) to help optimize the installation on inclined surfaces/platforms
- Standard 2 year warranty



Non Adjustable OneWeb Mobility Mount Pre-Assembled
(OW-1100-NON-ADJ)

Non-Adjustable OneWeb Mobility Mount
w/Panel



Adjustable OneWeb Mobility Mount Pre-Assembled
(OW-1100-ADJ)



Adjustable OneWeb Mobility Mount w/Panel
(Shown at 3 deg)

Physical

Non-Adjustable OneWeb Mobility Mount: (OW-1100-NON-ADJ)	LxWxH: 52.0x34.5x5.3cm (20.5"x13.5"x2.0")
Weight:	1.1 kg (2.4 lbs)
Adjustable OneWeb Mobility Mount: (OW-1100-ADJ)	LxWxH: 52.0x44.1x10.2cm (20.5"x17.4"x4.0")
Weight:	2.6 kg (5.7 lbs)

Shipping Weights & Dimensions*

HL1100 OneWeb Mobility Mount packaging:	
Non-Adjustable:	81x15x15cm (32"x6"x6"); 1.5 kg (3.5 lbs)
Adjustable:	81x15x15cm (32"x6"x6"); 3 kg (6.5 lbs)
HL1100 OneWeb Mobility Mount Assembled packaging:	
Non-Adjustable:	56x46x10cm (22"x18"x4"); 1.5 kg (3.5 lbs)
Adjustable:	56x46x10cm (22"x18"x4"); 3 kg (6.5 lbs)

* The shipping weights/dims can vary for particular shipments depending on actual system configuration, quantity, packaging materials and special requirements

